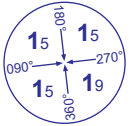
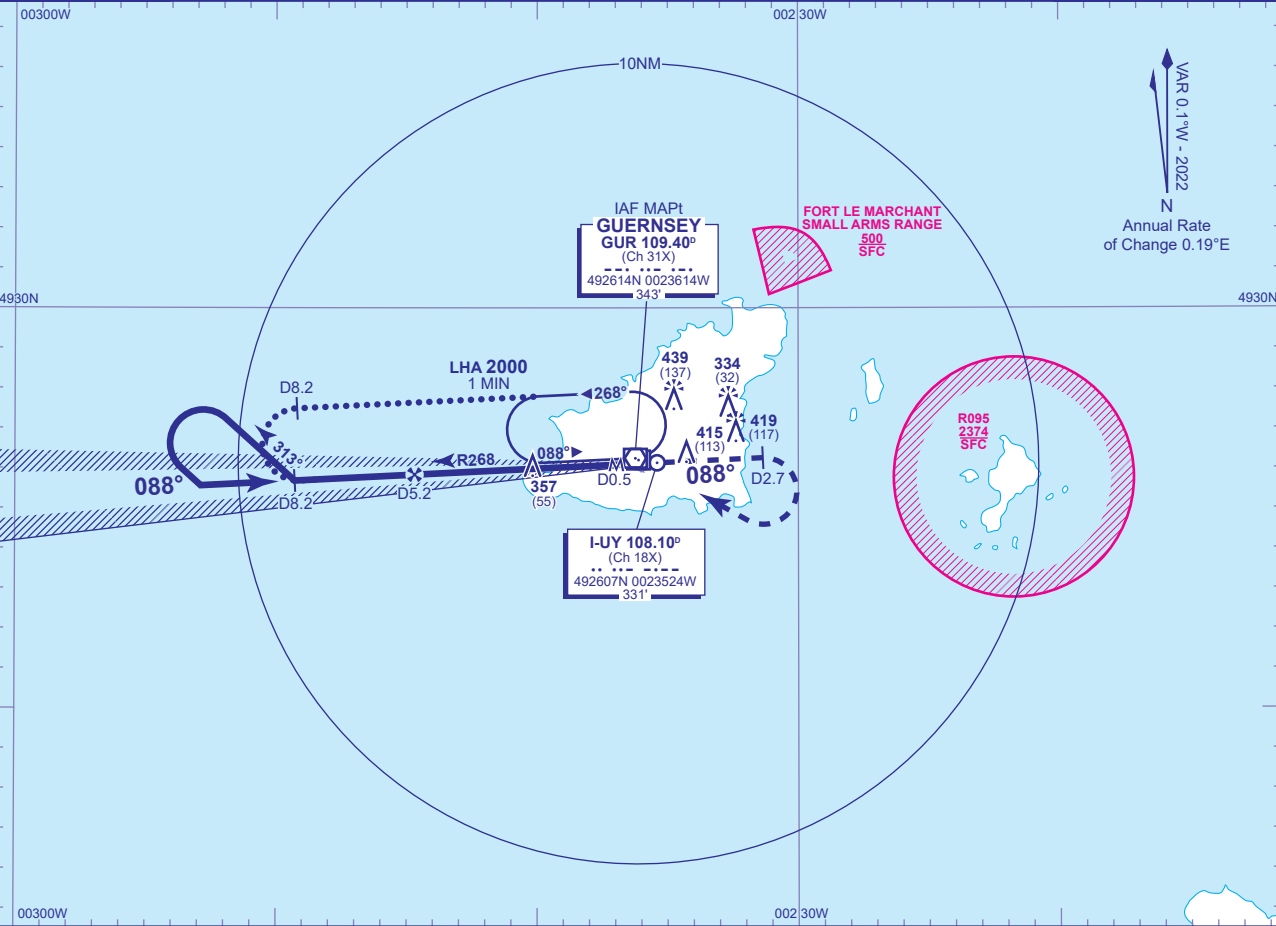


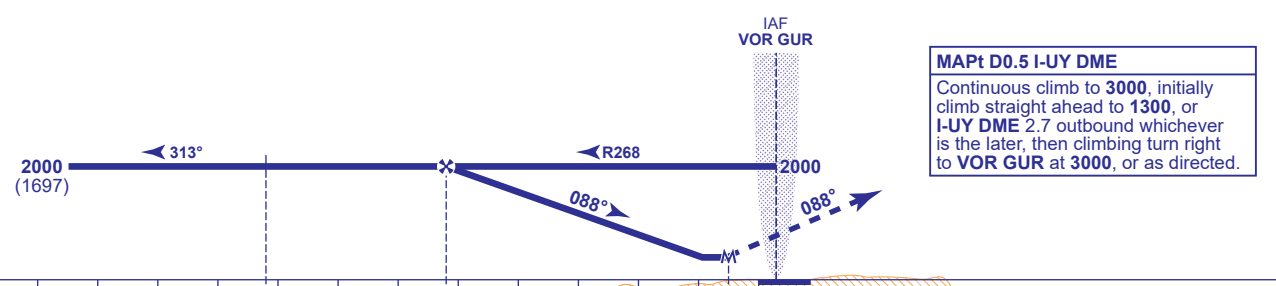
INSTRUMENT APPROACH CHART - ICAO

GUERNSEY
LOC/DME/VOR
RWY 09
(ACFT CAT A,B,C,D)

	APP	128.655	GUERNSEY APPROACH	AD ELEVATION	336	LOC/DME/VOR RWY 09 (ACFT CAT A,B,C,D)
	TWR	119.955	GUERNSEY TOWER	THR ELEVATION	302	
	GMC	121.805	GUERNSEY GROUND	OBSTACLE ELEVATION 439 AMSL (137) (ABOVE THR)		
	RAD	124.505	GUERNSEY RADAR			
	ATIS	109.400	GUERNSEY INFORMATION		BEARINGS ARE MAGNETIC	
				TRANSITION ALTITUDE		5000



RECOMMENDED PROFILE Gradient 5.24%, 320FT/NM					
DME I-UY	5	4	3	2	1
ALT(HGT)	1950(1648)	1630(1328)	1310(1008)	990(688)	670(368)



Aircraft Category		A	B	C	D	Rate of descent	G/S KT	160	140	120	100	80
OCA (OCH)	Procedure	630(328)	630(328)	630(328)	630(328)		FT/MIN	850	740	640	530	420
VM(C)OCA (OCH AAL)	Total Area	830(494)	830(494)	930(594)	1030(694)							

ALTERNATIVE PROCEDURE EXTENDED HOLDING PATTERN
Arrival at VOR GUR at 2000. Extend the outbound leg of the VOR GUR holding pattern to I-UY DME 8.2 then turn left to establish on LOC. When established, descend to MDA(H).

NOTE Aircraft will normally be required to hold not lower then 3000.